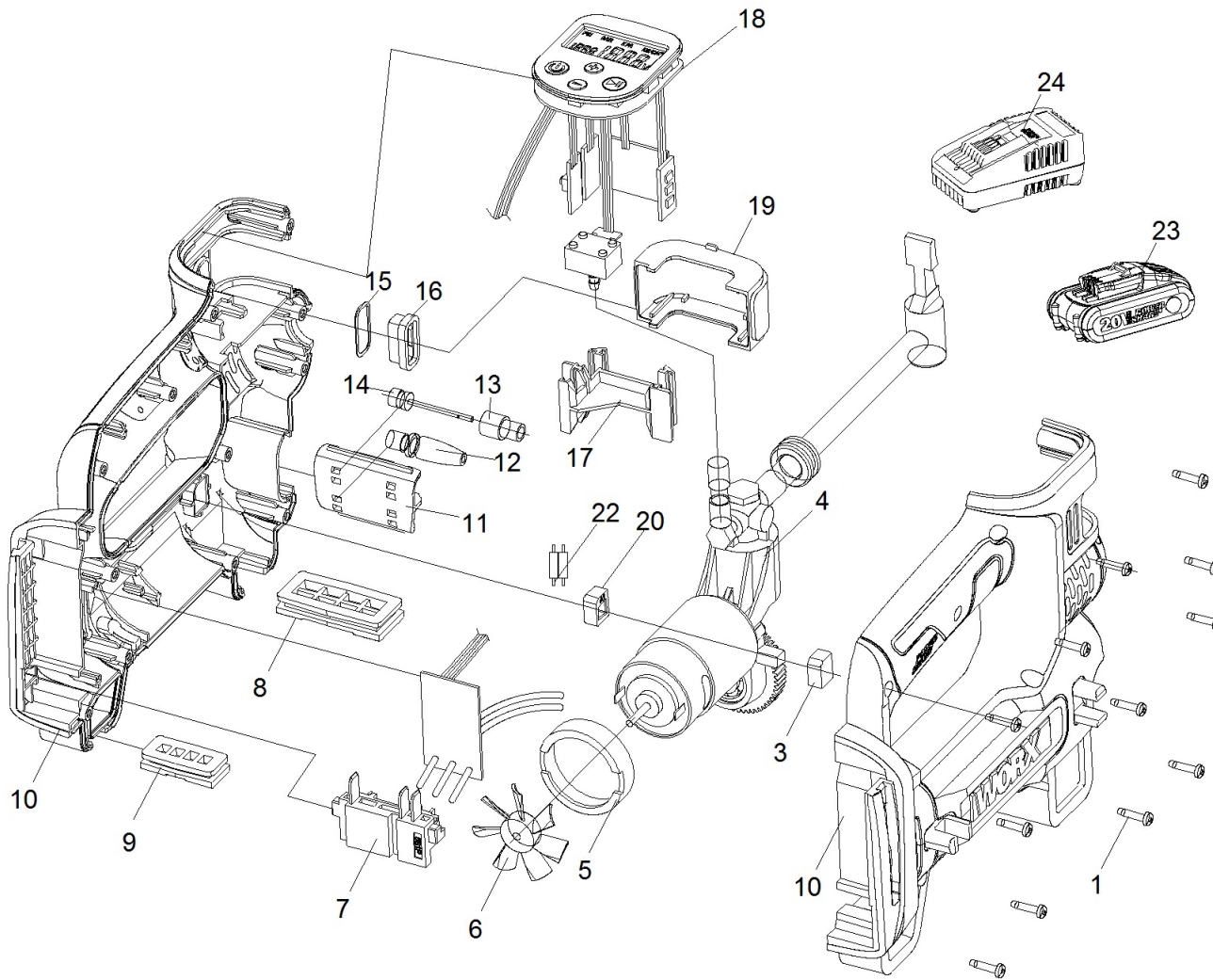




WX092



WX092

	Part No	Description	Qty
1	60060704	Self tapping Screw(F)	12
3	60060705	Absorbing pad A2	1
4	60060706	Pumb component	1
5	60060707	Absorbing ring	1
6	60060708	Fan	1
7	60061722	Electrode holder	1
8	60060710	Foot pad I	1
9	60060711	Foot pad II	1
10	60061723	Left/Right housing	1
11	60060713	Attachment box	1
12	60060714	Plastic nozzle	1
13	60060715	Steel nozzle	1
14	60060716	Air nozzle adapter	1
15	60060717	Lamp button gasket	1
16	60060718	Lamp button	1
17	60060719	Lamp holder	1
18	60061724	Digital display board assembly	1
19	60060721	Lamp cover	1
20	60060722	Absorbing pad A2	1
22	60061725	Inductance	2

WX092

	Part No	Description	Qty
23	50032288	"Battery Pack(Li-ion,2.0Ah,20V) WA3551"	1
24	50036688	"Charger(100-240V,2.0Ah,20V)WA3880"	1