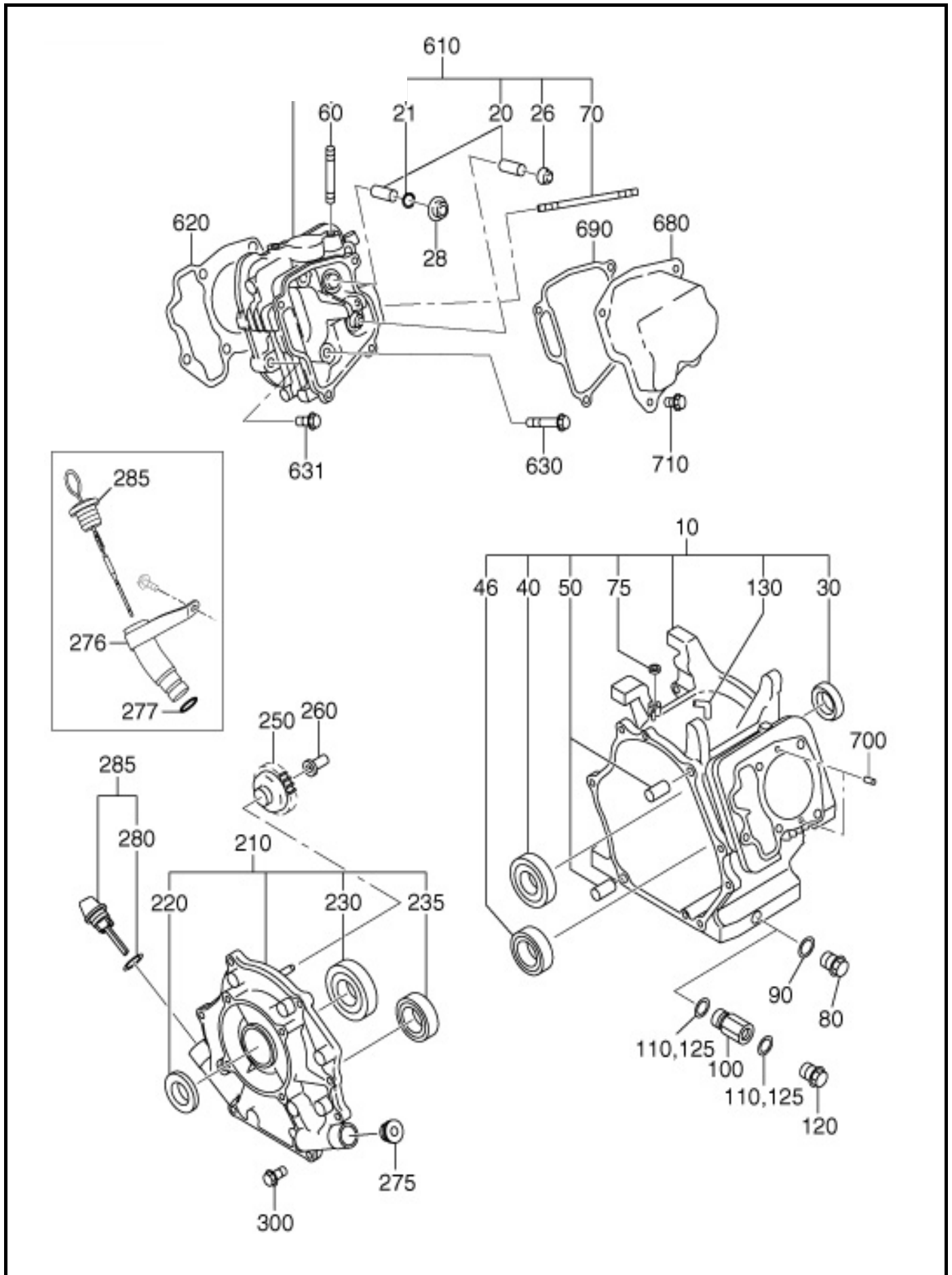


1 CRANK CASE GROUP

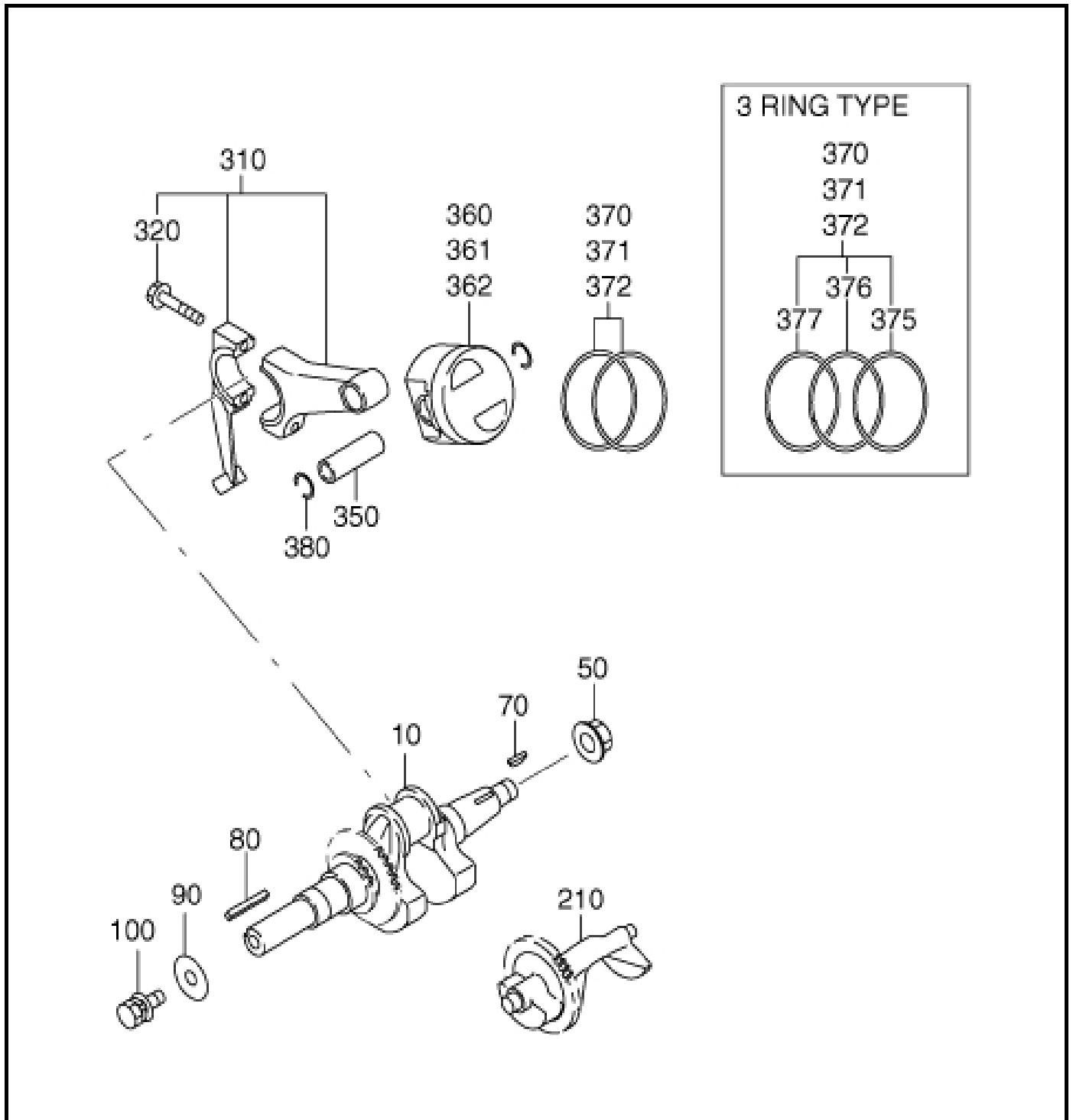
FIG. 100



# 1 CRANK CASE GROUP

REF.	PART NUMBER	PART NAME	QTY		FIG.
10	22G-10102-01	CRANKCASE CP	1	OS	100
10	22G-10101-01	CRANKCASE CP	1	w/o OS	
21	22G-03201-00	CLIP	1		100
26	22G-16010-01	STEM SEAL	1		100
28	22G-35341-03	RETAINER PLATE	1		100
30	22G-04801-00	OIL SEAL	1		100
40	22G-06101-00	BALL BEARING	1		100
46	22G-06102-00	BALL BEARING	1		100
50	20A-15011-03	PIPE KNOCK	2		100
60	20A-01613-00	STUD	2		100
70	20A-01601-00	STUD	2		100
75	22G-04802-00	OIL SEAL	1		100
80	20A-04101-00	PLUG	2		100
90	20A-02201-00	GASKET	2		100
210	22G-11001-01	MAINBEARING COVER CP	1		100
210	22G-11002-01	MAINBEARING COVER CP	1	SAE-B	100
220	22G-04801-00	OIL SEAL	1		100
230	22G-06101-00	BALL BEARING	1		100
235	22G-06102-00	BALL BEARING	1		100
250	22G-45003-01	GOVERNOR GEAR CP	1		100
260	20A-41901-03	GOVERNOR SLEEVE	1		100
285	22E-63601-00	OIL GAUGE AY	2		100
300	22G-01101-00	FLANGE BOLT	8		100
610	22G-13001-01	CYLINDER HEAD cp	1		100
620	22G-15001-03	GASKET (HEAD)	1		100
630	22G-01102-00	FLANGE BOLT	4		100
631	20A-01101-00	FLANGE BOLT	2		100
680	22G-15501-01	ROCKER COVER CP	1		100
690	22G-16001-03	GASKET (ROCKER COVER)	1		100
700	22G-03101-00	DOWEL PIN	2		100
710	20A-01111-00	FLANGE BOLT	4		100

FIG. 200



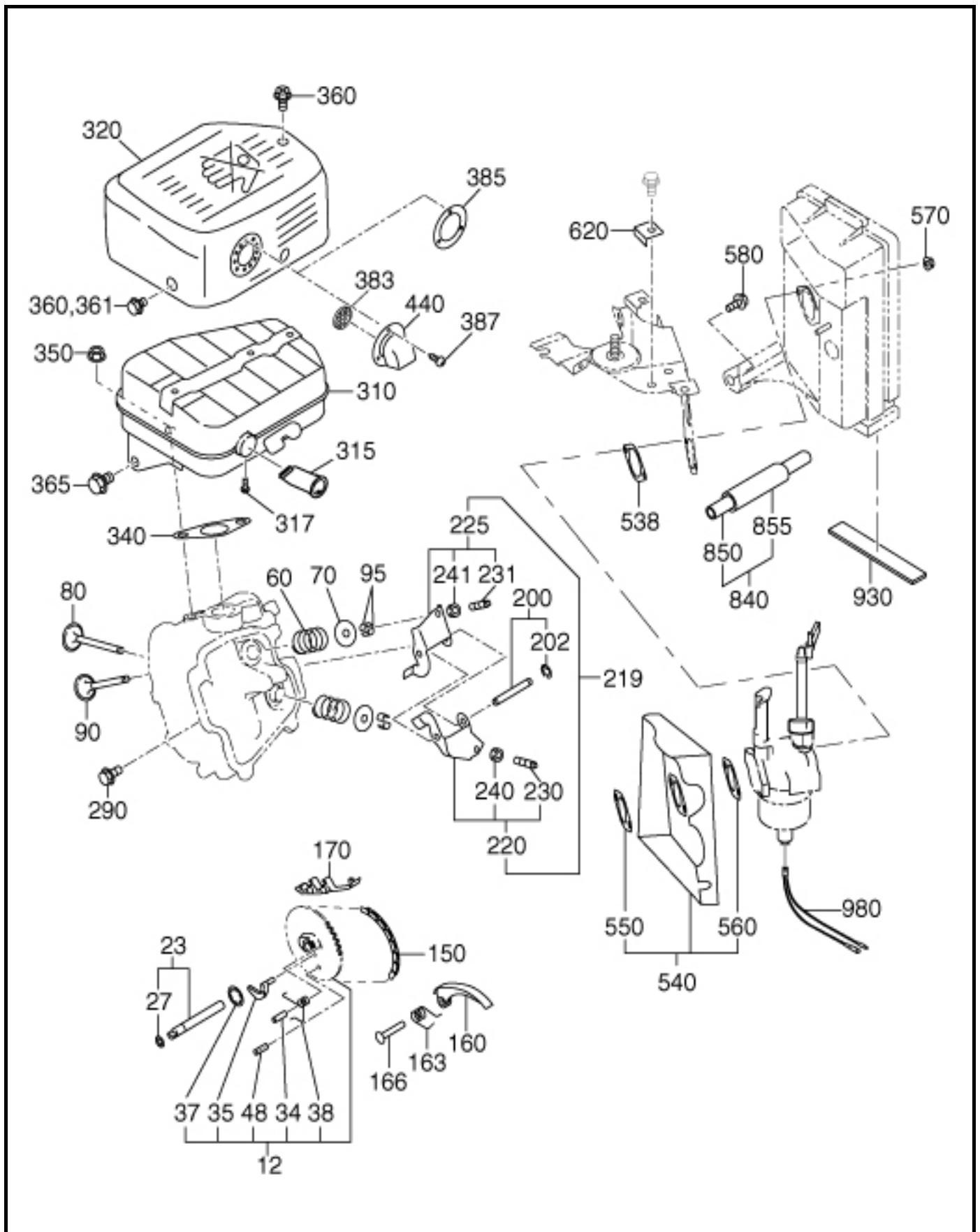
## 2 CRANKSHAFT, PISTON GROUP

REF.	PART NUMBER	PART NAME	QTY		FIG.
10	22G-20202-01	CRANKSHAFT CP	1		200
10	22G-20901-13	CRANKSHAFT CP	1		
50	22G-01851-00	FLANGE NUT	1		200
70	22G-03601-00	WOODRUFF KEY	1		200
80	22G-03602-00	KEY	1		200
80	22G-26001-03	KEY	1		
90	22G-02107-00	WASHER	1		200
100	22G-01307-00	BOLT AND WASHER AY	1		200
210	22G-24101-03	BALANCER SHAFT	1		200
310	22G-22503-00	CONNECTING ROD AY	1		200
320	22G-01103-00	FLANGE BOLT	2		200
350	22G-23301-03	PISTON PIN	1		200
360	22G-23401-03	PISTON	1		200
375	22G-23601-03	TOP RING	1		200
376	22G-23701-03	SECOND RING	1		200
377	22G-23921-03	OIL RING	1		200
380	22G-03202-00	CLIP	2		200

FIG. 300

3 INTAKE, EXHAUST GROUP

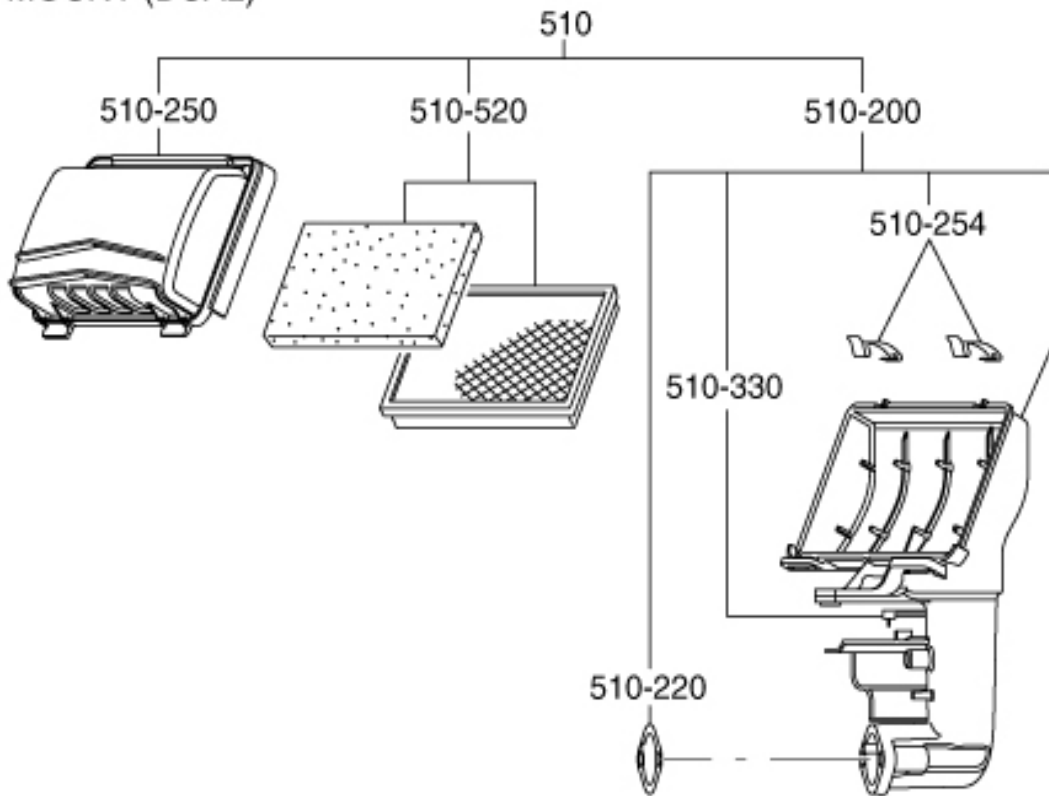
FIG. 300



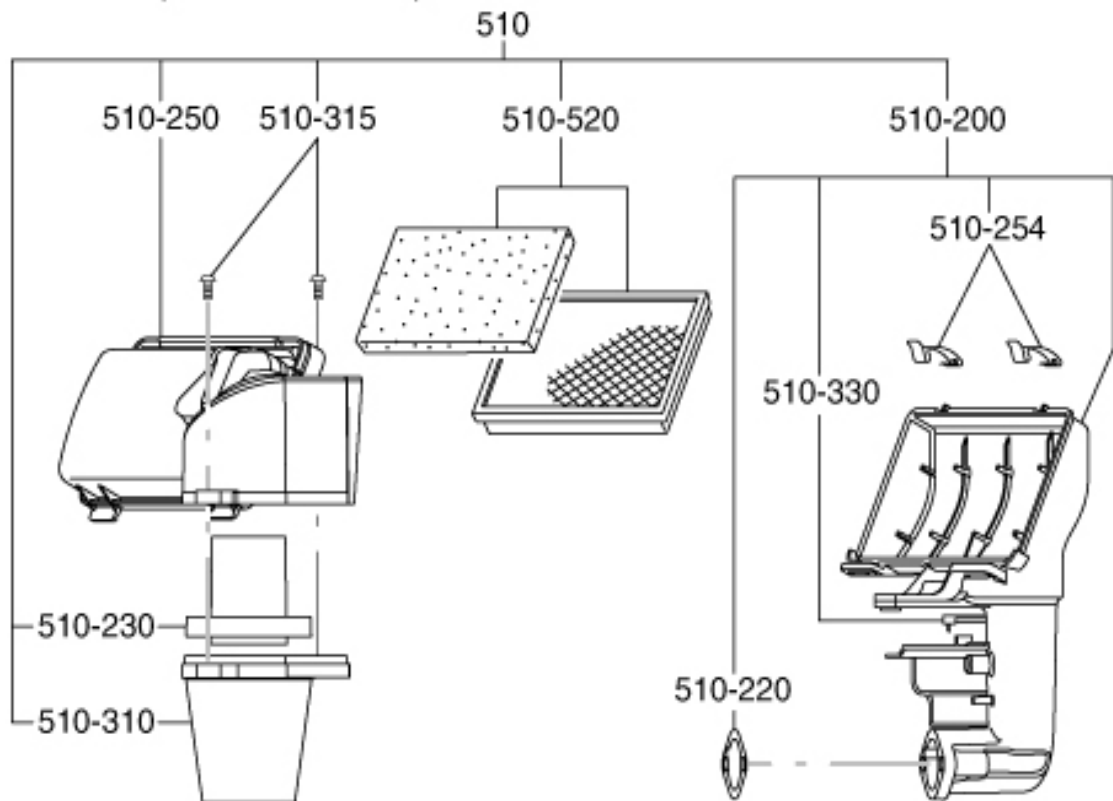
### 3 INTAKE, EXHAUST GROUP

REF.	PART NUMBER	PART NAME	QTY		FIG.
12	22G-31601-00	CAMSHAFT AY	1		300
23	22G-35101-01	PIN(CAM SHAFT) CP	1		300
27	22G-02801-00	O-RING	1		300
60	22G-33611-03	VALVE SPRING	2		300
70	22G-33711-03	SPRING RETAINER	2		300
80	22G-33402-03	INTAKE VALVE	1		300
90	22G-33502-03	EXHAUST VALVE	1		300
95	22G-35501-03	COLLET-VALVE	4		300
150	22G-35601-01	TIMING CHAIN CP	1		300
160	20A-36911-03	TENTIONER	1		300
163	20A-37101-03	SPRING (TENTIONER)	1		300
166	20A-36902-03	PIN(TENTIONER)	1		300
170	20A-36913-03	CHAIN GUIDE	1		300
200	22G-35001-01	PIN(ROCKER) CP	1		300
202	22G-03203-00	CLIP	1		300
220	22G-36101-00	ROCKER ARM(IN) AY	1		300
225	22G-36102-00	ROCKER ARM(EX) AY	1		300
290	20A-01111-00	FLANGE BOLT	1	10215-	300
	20A-01112-00	FLANGE BOLT	1	-10214	300
310	22G-30101-02	MUFFLER UN	1		300
320	22G-34201-01	MUFFLER COVER CP	1		300
340	22G-35201-03	GASKET (MUFFLER)	1		300
350	20A-01851-20	FLANGE NUT	2		300
360	20A-01112-00	FLANGE BOLT	5		300
365	20A-01104-00	FLANGE BOLT	1		300
387	20A-01402-00	TAPPING SCREW	3		300
440	22G-37002-01	DEFLECTOR CP	1	40003220	300
538	22G-35903-03	GASKET 3	1		300
540	22G-32901-01	INSULATOR CP	1		300
550	22G-35902-03	GASKET 2	1		300
560	22G-35901-03	GASKET 1	1		300
570	20A-01852-00	FLANGE NUT	2		300
580	20A-01115-00	FLANGE BOLT	1		300
620	22G-57101-01	COVER STAY CP (A/C)	1		300
850	22G-08101-00	RUBBER PIPE	1		300

FIG. 317  
HI MOUNT (DUAL)



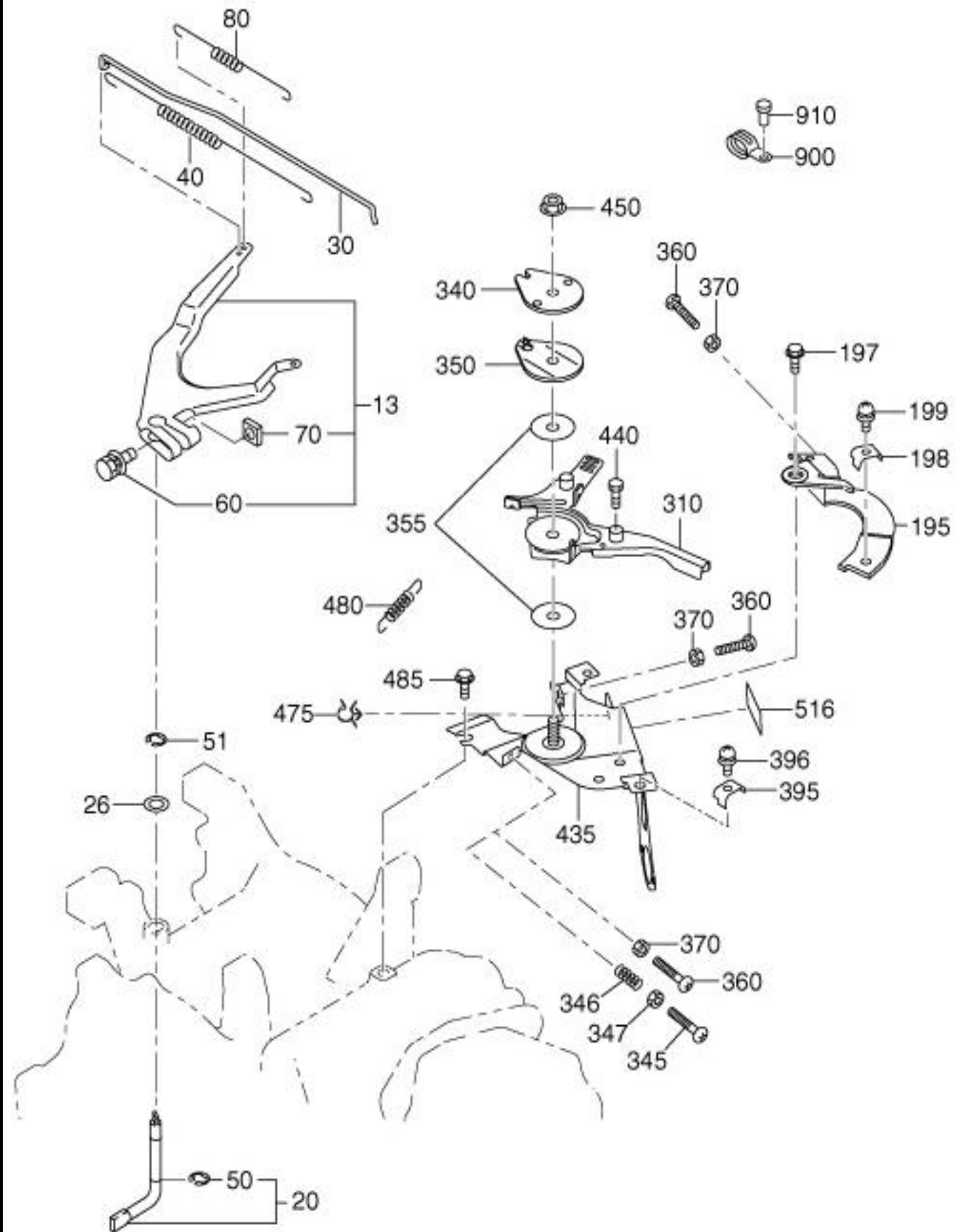
HI MOUNT (PRE CYCLONE)



REF.	PART NUMBER	PART NAME	QTY		FIG.
510	20B-32651-J0	AIR CLEANER AY	1	kd	317
	22G-32611-00	AIR CLEANER AY	1	dual	

4 GOVERNOR OPERATION GROUP

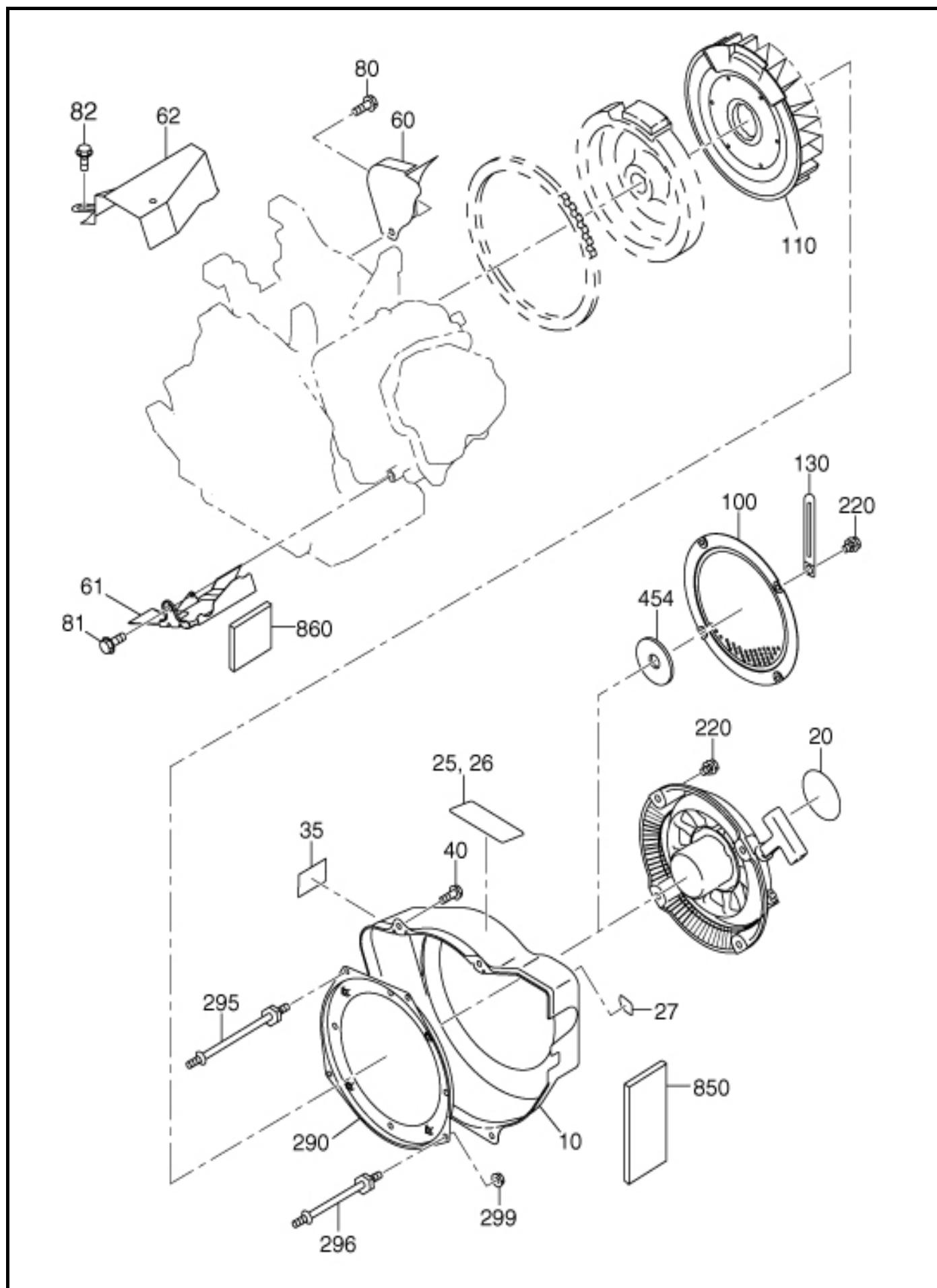
FIG. 400



#### 4 GOVERNOR OPERATION GROUP

REF.	PART NUMBER	PART NAME	QTY		FIG.
13	22G-42301-00	GOVERNOR LEVER AY	1		400
20	22G-42201-01	GOVERNOR SHAFT CP	1		400
26	22G-02101-00	WASHER	1		400
30	22G-42701-03	GOVERNOR ROD	1		400
40	22G-42801-03	ROD SPRING	1		400
50	22G-03203-00	CLIP	1		400
51	22G-03203-00	CLIP	1		400
80	22G-42501-03	GOVERNOR SPRING	1		400
310-480	22G-46101-00	SPEED CONT AY	1		400
485	20A-01111-00	FLANGE BOLT	1		400
516	20A-09841-00	LABEL (HI-LOW)	1		400

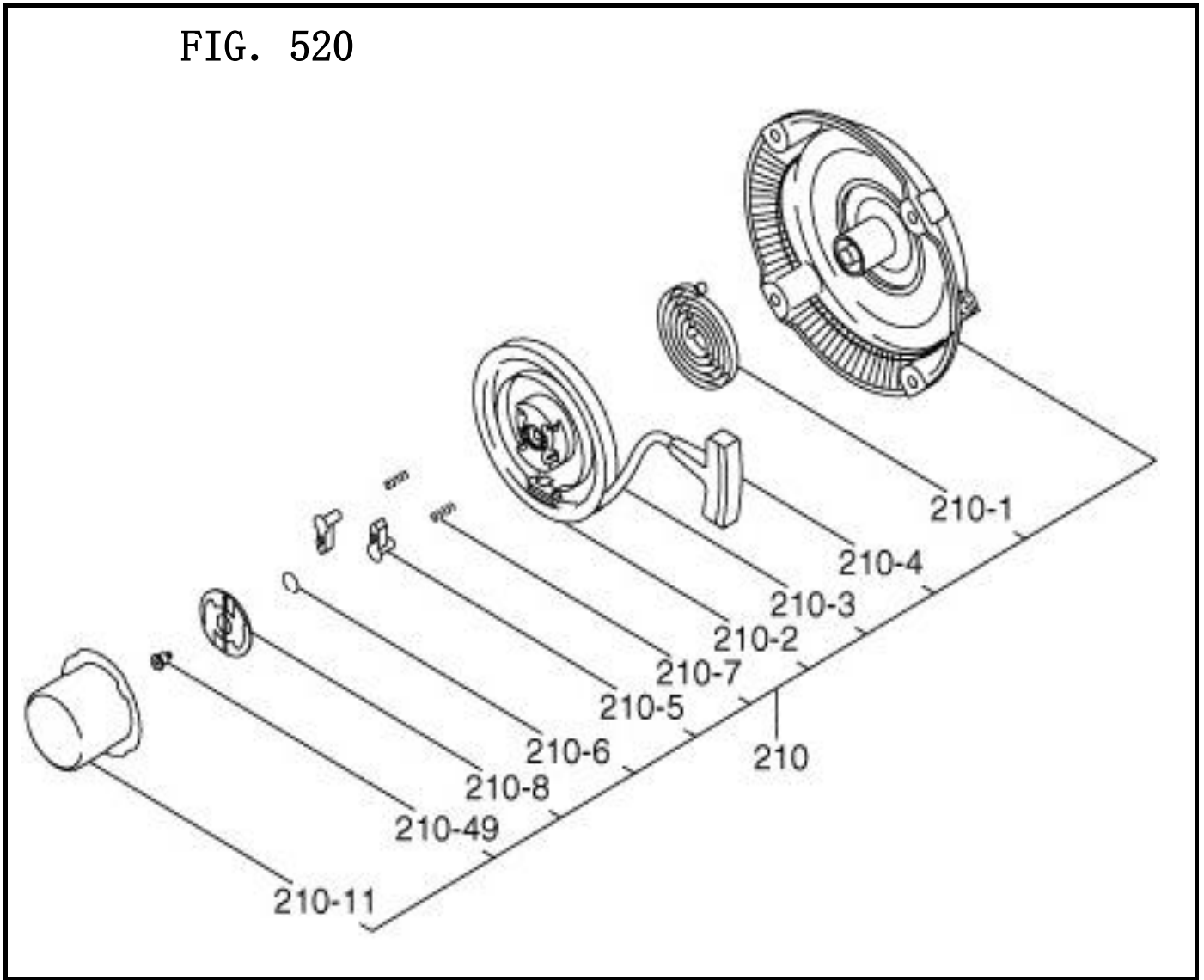
FIG. 500



## 5 COOLING, STARTING GROUP

REF.	PART NUMBER	PART NAME	QTY		FIG.
10	22G-51302-01	BLOWER HOUSING CP	1	BLACK	500
10		BLOWER HOUSING CP	1	YELLOW	
20			1		500
40	20A-01111-00	FLANGE BOLT	4		500
60	22E-52711-01	BAFFLE 1(CASE) CP	1		500
61	22G-52704-01	BAFFLE 2(HEAD) CP	1		500
80	22G-01201-00	BOLT	1		500
81	20A-01112-00	FLANGE BOLT	2		500
110	22G-54101-03	COOLING BLOWER	1		500
220	22G-01301-00	BOLT AND WASHER AY	4		500

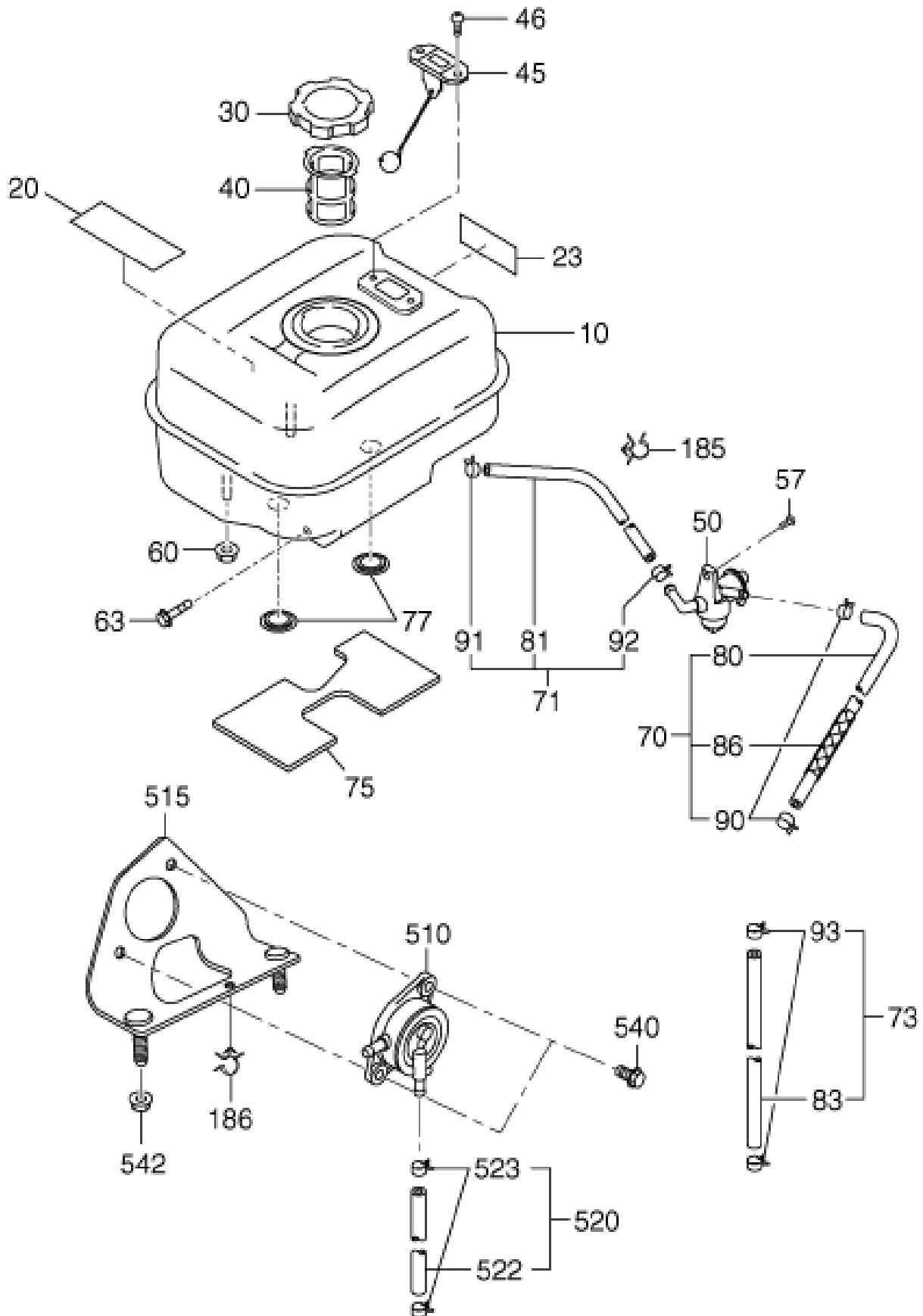
5 COOLING, STARTING GROUP



5 COOLING, STARTING GROUP

REF.	PART NUMBER	PART NAME	QTY		FIG.
210	22G-50301-00	RECOIL STARTER AY	1		520

FIG. 600

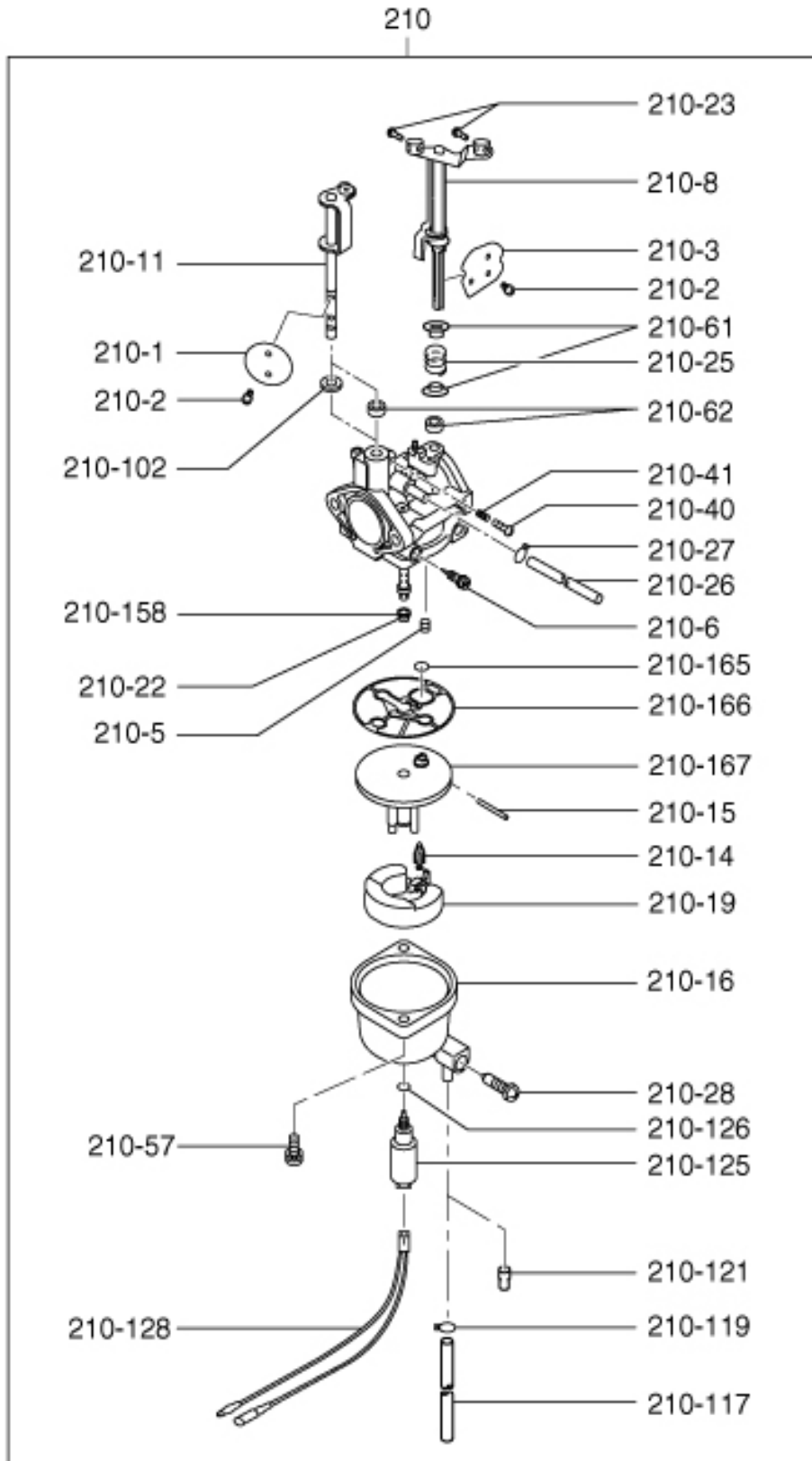


## 6 FUEL, LUBRICANT GROUP

REF.	PART NUMBER	PART NAME	QTY		FIG.
10	22G-60102-01	FUEL TANK CP	1	black	600
20	X73-20057-60	LABEL (WARNING)	1	073-20057-60	600
23	22G-95103-03	LABEL (MODEL)	1		600
30	22G-04401-00	FUEL TANK CAP CP	1		600
40	20A-06401-00	FUEL FILTER	1		600
50	X64-20122-01	FUEL STRAINER AY	1		600
57	20A-01112-00	FLANGE BOLT	1		600
60	20A-01851-00	FLANGE NUT	2		600
63	20A-01105-00	FLANGE BOLT	2		600
71	22G-62604-01	FUEL PIPE CP	1		600
81	22G-08102-00	RUBBER PIPE	1		600
92	20A-05801-00	HOSE CLAMP	2		600
70	22G-62601-01	FUEL PIPE CP	1	851	600
80	22G-08103-00	RUBBER PIPE	1		600
90	22G-05802-00	HOSE CLAMP	2		600
185	22G-05901-00	CLAMP	1		600

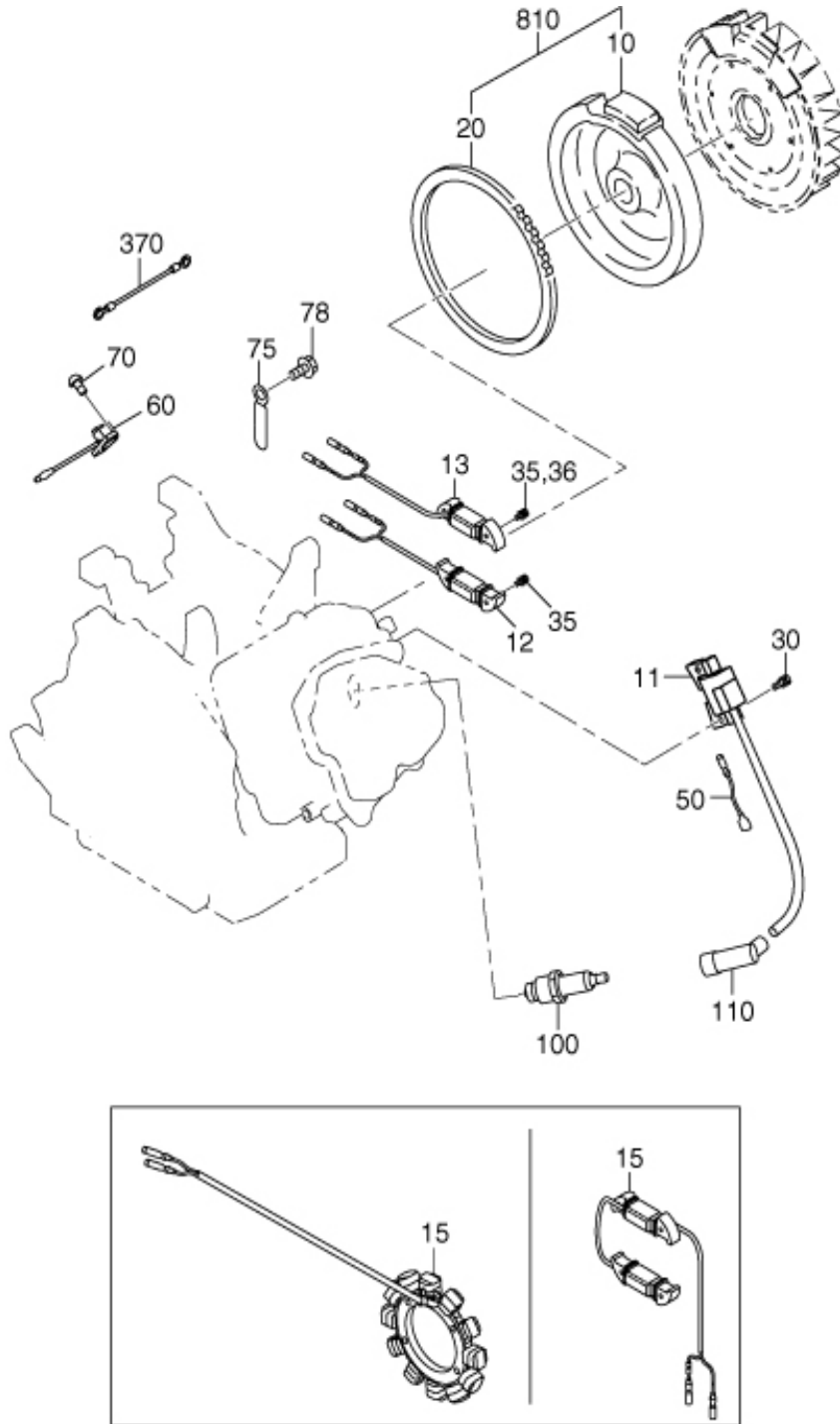
6 FUEL, LUBRICANT GROUP

FIG. 640



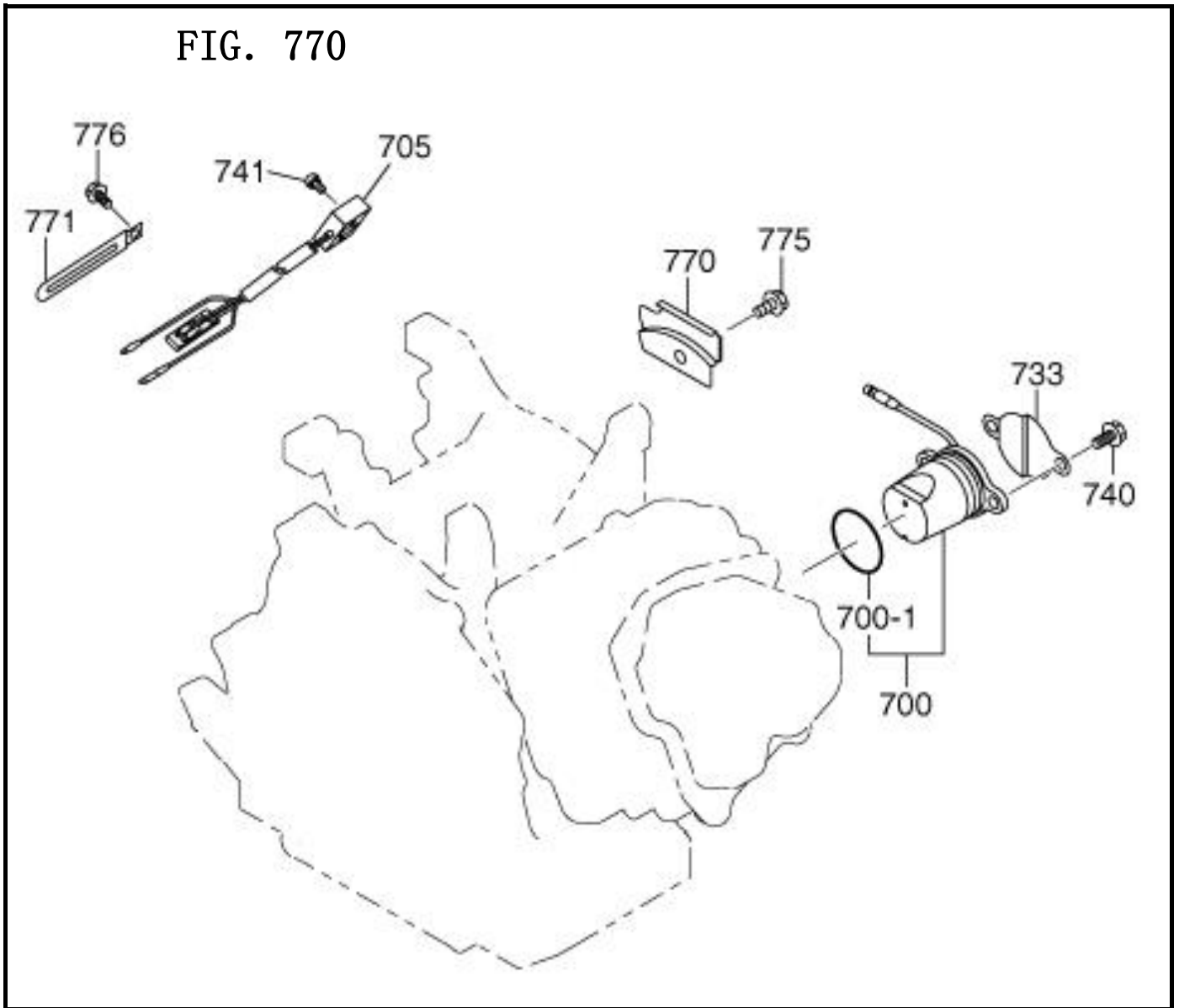
REF.	PART NUMBER	PART NAME	QTY		FIG.
210	22G-62301-00	CARBURETOR AY	1		
210	22G-62320-00	CARBURETOR AY	1		640

FIG. 700



REF.	PART NUMBER	PART NAME	QTY	FIG.
10	22G-79230-01	FLYWHEEL CP	1	700
11-110	22G-79430-01	IGNITION COIL CP	1	700
30	22G-01302-00	BOLT AND WASHER AY	2	700
50	22G-73101-01	WIRE 1 CP	1	700
70	20A-01403-00	TAPPING SCREW	2	700
75	22G-79006-01	CLAMP CP	1	700
78	20A-01112-00	FLANGE BOLT	1	700
100	20A-06701-00	SPARK PLUG	1	700
110	22G-06801-00	SPARK PLUG CAP	1	700

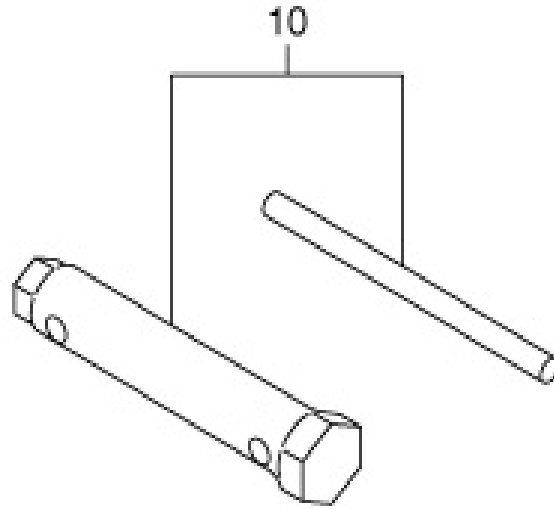
7 ELECTRIC DEVICE GROUP



REF.	PART NUMBER	PART NAME	QTY		FIG.
700	279-76301-61	OIL SENSOR CP	1		770
-1	277-76350-08	O RING	1		770
705	KU3-11077-01	FLOAT C/U CP11	1		770
733	20A-75801-03	SHIELD PLATE(O/S)	1		770
740	20A-01120-00	FLANGE BOLT	2		770
741	20A-01201-00	TAPPING BOLT	2		770
770	22G-75501-01	WIRE CLAMP CP	1		770
775	20A-01201-00	TAPPING BOLT	1		770

9 ACCESSORIES, LABEL

FIG. 900



9 ACCESSORIES LABEL

REF.	PART NUMBER	PART NAME	QTY		FIG.
10	22G-90301-00	ACCESSORY TOOL KIT	1		900