

(Note vulnerable properties: Refers to the degree of wear and tear in the day-to-day operation of the correct use of this part which according to guide customers reasonable reserves. A for wear and tear easily, B for wear and tear is not easy while C for wear and tear on behalf of the non-basic. The part of A proposal by the highest parts inventory reserves; B for stocking pieces according to the minimum reserves and C try not to make reserves for)

机型Model:3WG4-50FQ-D

成品编码Code Number:TT50010401-0000000

版本号: LC/LT - 2025 - A

减速箱部件 (Gearbox)

Ser.No	Part No.		Reqd. QTY	CONSUMABLE GRADE
1	195640011-0001	Output shaft Dust cover	4	C
2	380651023-0001	Oil seal	2	A
3	380630306-0001	Bearing	4	B
4	193050056-0001	Output shaft	1	B
5	260010200-0001	Chain	1	B
6	290420309-0001	Sprocket wheel	1	C
7	380550158-0001	Circlip	3	B
8	191910035-0001	Reduction gearbox body	1	C
9	380651020-0001	Oil seal	6	A
10	110500109-0001	RUBBER PLUG	3	A
11	380630099-0001	Bearing	3	B
12	195240027-0001	driven gear of duplicate gears	1	B
13	380630980-0001	Bearing	1	B
14	380451661-0001	Flat washer	2	C
15	380824781-0001	Bushing	1	C
16	195950006-0001	Reduction gearbox drive sprocket axle	1	B
17	290420259-0001	Sprocket wheel	1	B
18	380824782-0001	Bushing	1	C
19	192030004-0001	driven gear	1	C
20	380630002-0001	Bearing	3	B
21	380550224-0002	Circlip	3	B
22	110500110-0001	RUBBER PLUG	3	A
23	110500106-0001	RUBBER PLUG	1	A
24	380550310-0001	Circlip	1	B
25	380630037-0001	Bearing	1	B
26	194510016-0001	GEAR, TRANSMISION COUNTERSHAFT	1	B
27	380630979-0001	Bearing	2	B
28	194700011-0001	counter carrier gear	1	B
29	191440069-0001	GEAR, COUNTERSHAFT SECOND	1	B
30	380824779-0001	Bushing	1	C
31	191420077-0001	countershaft first gear	1	B
32	193040018-0001	Counter shaft	1	B

减速箱部件 (Gearbox)

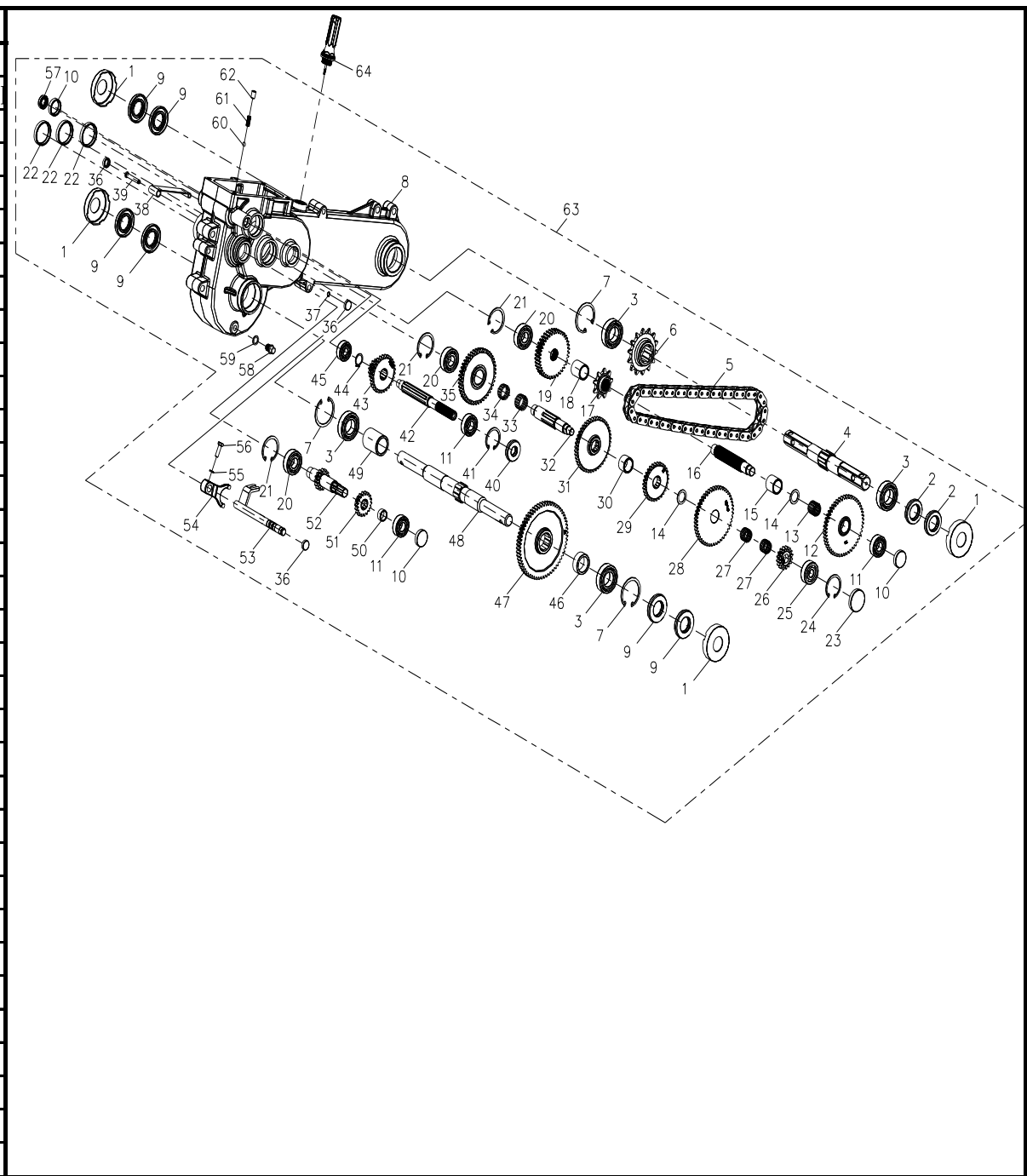
Ser.No	Part No.		Reqd. QTY	CONSUMABLE GRADE
33	380631035-0001	Bearing	1	B
34	380631036-0001	Bearing	1	B
35	191450002-0001	GEAR ASSY., COUNTERSHAFT THIRD	1	B
36	110500108-0001	RUBBER PLUG	3	A
37	380550311-0001	Circlip	1	B
38	140910039-0001	Chain tension plate	1	C
39	380610637-0001	Pin	1	C
40	380651022-0001	Oil seal	1	A
41	380550138-0001	Circlip	1	B
42	193020026-0001	Drive shaft	1	B
43	195230025-0001	driving gear of duplicate gears	1	B
44	380550312-0001	Circlip	1	B
45	380630098-0001	Bearing	1	B
46	380824783-0001	Bushing	1	C
47	193060025-0001	GEAR, OUTPUT SHAFT	1	B
48	195130007-0001	OUTPUT SHAFT, FRONT DRIVE	1	B
49	380824784-0001	Bushing	1	C
50	380824780-0001	Bushing	1	C
51	191770021-0001	DRIVING WHEEL, REVERSE GEAR	1	B

52	194480027-0001	Reverse shaft	1	B
53	192130086-0001	SHIFTING FORK Axis	1	B
54	192120212-0001	SHIFTING FORK	1	B
55	380460003-0003	Elastic washer	1	B
56	380070012-0006	Hexagon bolt	1	C
57	380651021-0001	Oil seal	1	A
58	110260106-0001	Sealing plug screw	1	C
59	380451238-0001	Flat washer	1	C
60	380640007-0001	Steel ball	1	B
61	381150824-0001	Compression spring	1	B
62	381610034-0002	SCREW	1	C
63	191890024-0001	Gearbox	1	C
64	110690158-0001	Oil rule combination	1	B
手把管组合 (Lever combination)				
Ser.No	Part No.		Reqd. QTY	CONSUMABLE GRADE
1	320180277-0001	Lever Rubber	2	A
2	271510218-0001	Handle(Left)	1	B
3	380900062-0001	Strap	6	A
4	380140005-0006	Hexagon bolt with flange	1	C
5	381160237-0001	Torsion spring	1	A
6	661750005-0001	HANDLE	1	B
7	380350006-0001	Hexagon locknut for nonmetal insert	5	C
8	320400080-0004	Lever combination	1	C
9	271510191-0001	Handle(Left)	1	B
10	662680007-0001	TURNABLE CABLE	1	A
11	380350003-0002	Hexagon locknut for nonmetal insert	1	C
12	380450004-0003	Flat washer	1	C
13	171210837-0001	Throttle cable	1	A
14	381030003-0001	Step bolt	1	C
15	341620018-0005	Handlebar Cover	1	C
16	380450003-0006	Flat washer	7	C
17	320050161-0002	Handlebar Connecting seat	1	C
18	380310137-0001	Cross recessed pan head tapping screw	4	C
19	331510103-0001	U hold hoop	2	B
20	380450024-0006	Flat washer	1	C
21	380930045-0001	Location wire nail	1	B
22	381150629-0001	Compression spring	1	A
23	380610337-0001	Pin	1	C
24	296270003-0001	positioning screw	1	C
25	380140091-0005	Hexagon bolt with flange	3	C
26	380460001-0006	Elastic washer	3	B
27	380140004-0004	Hexagon bolt with flange	1	C
28	191920031-0002	Reduction gearbox cover	1	C
29	191940014-0001	Reduction gearbox gasket	1	A
30	381430046-0001	Cushion	1	B
31	195830013-0002	Gear plate	1	C
32	380460003-0003	Elastic washer	6	B
手把管组合 (Lever combination)				
Ser.No	Part No.		Reqd. QTY	CONSUMABLE GRADE
33	380140209-0001	Hexagon bolt with flange	6	C
34	381160420-0001	Torsion spring	1	A
35	381350010-0001	Pin clip	1	A
36	195820022-0001	JOINT, GEAR LEVER	1	B
37	380450729-0001	Flat washer	4	C
38	195940024-0002	Gear Shift lever Combination	1	C
39	195720003-0001	handle coat, gear shift	1	A
40	664370001-0002	COVER, GEAR PLATE	1	C
发动机 (Engine assembly)				
Ser.No	Part No.		Reqd. QTY	CONSUMABLE GRADE
1	380140006-0005	Hexagon bolt with flange	2	C
2	662270020-0001	WEIGHT PIECE	1	C
3	380140005-0006	Hexagon bolt with flange	4	C
4	300110395-0001	Engine Bracket	1	C
5	380140959-0001	Hexagon bolt with flange	2	C

6	141200007-0001	Tensioner arm mandrel	1	C
7	380370007-0004	Hexagon nut with flange	2	C
8	380450006-0005	Flat washer	2	C
9	380350025-0001	Hexagon locknut for nonmetal insert	2	C
10	380450003-0006	Flat washer	5	C
11	380350006-0001	Hexagon locknut for nonmetal insert	5	C
12	210005881-00000	LC165F ENGINE ASSY.	1	B
皮带张紧轮 (Belt tensioning wheel)				
Ser.No	Part No.		Reqd. QTY	CONSUMABLE GRADE
1	380140004-0004	Hexagon bolt with flange	4	C
2	380450524-0001	Flat washer	6	C
3	661440011-0001	Driven pulley plate combination	1	C
4	661540024-0001	Belt tensioning wheel	1	C
5	381140438-0001	Tension spring	1	A
6	381160138-0001	Torsion spring	1	A
皮带护罩 (Strap Cover)				
Ser.No	Part No.		Reqd. QTY	CONSUMABLE GRADE
1	380140209-0001	Hexagon bolt with flange	4	C
2	380460003-0003	Elastic washer	4	B
3	380450729-0001	Flat washer	4	C
4	260170052-0001	Strap Cover	1	C
5	193000018-0002	belt	1	A
6	380140004-0004	Hexagon bolt with flange	1	C
7	380460001-0006	Elastic washer	2	B
8	195920013-0001	Follower Pulley combination	1	C
9	380140093-0005	Hexagon bolt with flange	1	C
10	380451100-0001	Flat washer	1	C
11	195910010-0001	driving pulley	1	C
阻尼臂 (Damping arm)				
Ser.No	Part No.		Reqd. QTY	CONSUMABLE GRADE
1	661400016-0001	Damping arm	1	B
2	381350031-0001	Pin clip	1	A
3	661390024-0002	Damping arm Holder	1	C
4	380610654-0001	Pin	1	C
5	380140977-0001	Hexagon bolt with flange	2	C
6	380450006-0005	Flat washer	2	C
7	380350025-0001	Hexagon locknut for nonmetal insert	2	C
挡泥板 (Mudguard)				
Ser.No	Part No.		Reqd. QTY	CONSUMABLE GRADE
1	380200234-0001	Cross recessed pan head screw	8	C
2	337090095-0001	HINGES	2	B
3	340660436-0002	FENDER COMP., REAR	1	C
4	380450028-0001	Flat washer	8	C
5	380350001-0003	Hexagon locknut for nonmetal insert	8	C
6	340310882-0002	FENDER COMP., FRONT	1	C
7	380140209-0001	Hexagon bolt with flange	6	C
8	380460003-0003	Elastic washer	10	B
9	380450729-0001	Flat washer	10	C
10	661420037-0002	Mudguard(left)	2	C
11	380140149-0002	Hexagon bolt with flange	2	C
12	380450003-0006	Flat washer	2	C
13	380350006-0001	Hexagon locknut for nonmetal insert	2	C
14	380140333-0001	Hexagon bolt with flange	4	C
耕刀部件 (Plow knife components)				
Ser.No	Part No.		Reqd. QTY	CONSUMABLE GRADE
1	380070045-0005	Hexagon bolt	16	C
2	661720049-0001	main tilth knife tube	2	B
3	661510017-0001	Plow blade(left)	4	B
4	661520015-0001	Plow blade(right)	4	B
5	380450003-0006	Flat washer	16	C
6	380460001-0006	Elastic washer	16	B
7	380340005-0005	Hexagon nut	16	C
8	661500073-0001	Plow knife components(right)	1	B

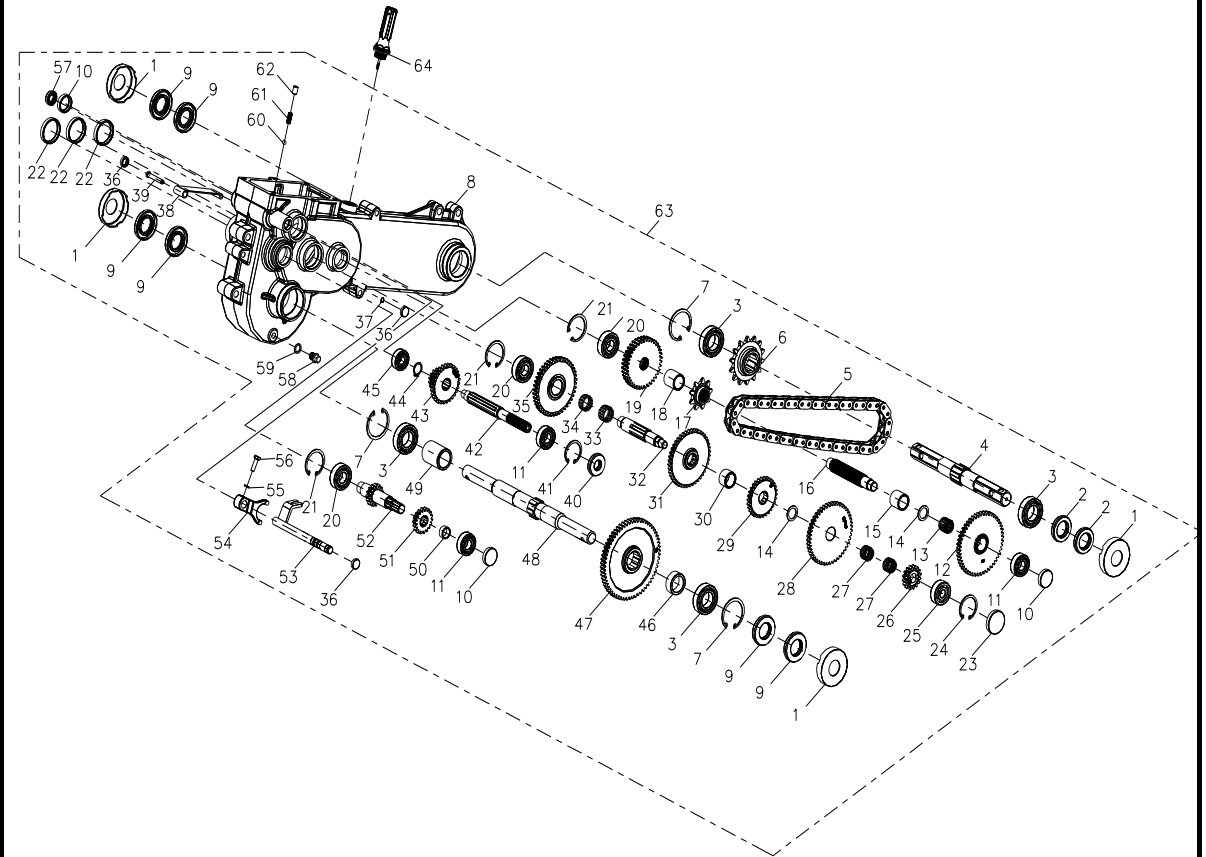
9	661560001-0001	Bayonet lock combination	2	A
10	661490078-0001	Plow knife components(left)	1	B
支撑轮部件 (Components of supporting wheel)				
Ser.No	Part No.		Reqd. QTY	CONSUMABLE GRADE
1	380070070-0001	Hexagon bolt	8	C
2	380070123-0004	Hexagon bolt	8	C
3	660710012-0001	Hub	2	C
4	290160406-0001	SHOE	2	A
5	290180266-0001	INNER TUBE	2	A
6	660710013-0001	Hub	2	C
7	380450006-0005	Flat washer	16	C
8	380460002-0006	Elastic washer	16	B
9	380340010-0004	Hexagon nut	16	C
10	660690021-0001	Components of supporting wheel	1	B
11	660730103-0001	Machine set supporting wheel shaft	2	C
12	661560001-0001	Bayonet lock combination	2	A
13	660690019-0001	Components of supporting wheel	1	B
燃油箱 (Tank)				
No.	Part No.		Reqd. QTY	Damageable grade
1	170870161-0001	Tank cover	1	B
2	170720003-0001	Pouring orifice filter screen combination	1	A
3	380140001-0006	Hexagon bolt with flange	4	B
4	170500641-0034	Tank	1	B
5	170660077-0001	Tank oilout	1	A
6	172840003-0001	Tank supporting bracket	1	C
7	380140102-0004	Hexagon bolt with flange	2	C

减速箱部件 (Gearbox)				
序号	零部件编号	Description	数量	易损属性
Ser.No	Part No.		Reqd. QTY	SUMABLE G
1	195640011-0001	Output shaft Dust cover	4	C
2	380651023-0001	Oil seal	2	A
3	380630306-0001	Bearing	4	B
4	193050056-0001	Output shaft	1	B
5	260010200-0001	Chain	1	B
6	290420309-0001	Sprocket wheel	1	C
7	380550158-0001	Circlip	3	B
8	191910035-0001	Reduction gearbox body	1	C
9	380651020-0001	Oil seal	6	A
10	110500109-0001	RUBBER PLUG	3	A
11	380630099-0001	Bearing	3	B
12	195240027-0001	driven gear of duplicate gear	1	B
13	380630980-0001	Bearing	1	B
14	380451661-0001	Flat washer	2	C
15	380824781-0001	Bushing	1	C
16	195950006-0001	Reduction gearbox drive sprocket	1	B
17	290420259-0001	Sprocket wheel	1	B
18	380824782-0001	Bushing	1	C
19	192030004-0001	driven gear	1	C
20	380630002-0001	Bearing	3	B
21	380550224-0002	Circlip	3	B
22	110500110-0001	RUBBER PLUG	3	A
23	110500106-0001	RUBBER PLUG	1	A
24	380550310-0001	Circlip	1	B
25	380630037-0001	Bearing	1	B
26	194510016-0001	GEAR, TRANSMISION COUNTERSHAFT	1	B
27	380630979-0001	Bearing	2	B
28	194700011-0001	counter carrier gear	1	B
29	191440069-0001	GEAR, COUNTERSHAFT SECOND	1	B
30	380824779-0001	Bushing	1	C
31	191420077-0001	countershaft first gear	1	B
32	193040018-0001	Counter shaft	1	B



减速箱部件 (Gearbox)

Ser.No	Part No.		Reqd. QTY	SUMABLE G
33	380631035-0001	Bearing	1	B
34	380631036-0001	Bearing	1	B
35	191450002-0001	GEAR ASSY., COUNTERSHAFT THI	1	B
36	110500108-0001	RUBBER PLUG	3	A
37	380550311-0001	Circlip	1	B
38	140910039-0001	Chain tension plate	1	C
39	380610637-0001	Pin	1	C
40	380651022-0001	Oil seal	1	A
41	380550138-0001	Circlip	1	B
42	193020026-0001	Drive shaft	1	B
43	195230025-0001	driving gear of duplicate g	1	B
44	380550312-0001	Circlip	1	B
45	380630098-0001	Bearing	1	B
46	380824783-0001	Bushing	1	C
47	193060025-0001	GEAR, OUTPUT SHAFT	1	B
48	195130007-0001	OUTPUT SHAFT, FRONT DRIVE	1	B
49	380824784-0001	Bushing	1	C
50	380824780-0001	Bushing	1	C
51	191770021-0001	DRIVING WHEEL, REVERSE GEAR	1	B
52	194480027-0001	Reverse shaft	1	B
53	192130086-0001	SHIFTING FORK Axis	1	B
54	192120212-0001	SHIFTING FORK	1	B
55	380460003-0003	Elastic washer	1	B
56	380070012-0006	Hexagon bolt	1	C
57	380651021-0001	Oil seal	1	A
58	110260106-0001	Sealing plug screw	1	C
59	380451238-0001	Flat washer	1	C
60	380640007-0001	Steel ball	1	B
61	381150824-0001	Compression spring	1	B
62	381610034-0002	SCREW	1	C
63	191890024-0001	Gearbox	1	C
64	110690158-0001	Oil rule combination	1	B



手把管组合 (Lever combination)				
序号	零部件编号	Description	数量	易损属性
Ser.No	Part No.		Reqd. QTY	SUMABLE G
1	320180277-0001	Lever Rubber	2	A
2	271510218-0001	Handle(Left)	1	B
3	380900062-0001	Strap	6	A
4	380140005-0006	Hexagon bolt with flange	1	C
5	381160237-0001	Torsion spring	1	A
6	661750005-0001	HANDLE	1	B
7	380350006-0001	Hexagon locknut for nonmeta	5	C
8	320400080-0004	Lever combination	1	C
9	271510191-0001	Handle(Left)	1	B
10	662680007-0001	TURNABLE CABLE	1	A
11	380350003-0002	Hexagon locknut for nonmeta	1	C
12	380450004-0003	Flat washer	1	C
13	171210837-0001	Throttle cable	1	A
14	381030003-0001	Step bolt	1	C
15	341620018-0005	Handlebar Cover	1	C
16	380450003-0006	Flat washer	7	C
17	320050161-0002	Handlebar Connecting seat	1	C
18	380310137-0001	Cross recessed pan head tap	4	C
19	331510103-0001	U hold hoop	2	B
20	380450024-0006	Flat washer	1	C
21	380930045-0001	Location wire nail	1	B
22	381150629-0001	Compression spring	1	A
23	380610337-0001	Pin	1	C
24	296270003-0001	positioning screw	1	C
25	380140091-0005	Hexagon bolt with flange	3	C
26	380460001-0006	Elastic washer	3	B
27	380140004-0004	Hexagon bolt with flange	1	C
28	191920031-0002	Reduction gearbox cover	1	C
29	191940014-0001	Reduction gearbox gasket	1	A
30	381430046-0001	Cushion	1	B
31	195830013-0002	Gear plate	1	C
32	380460003-0003	Elastic washer	6	B

