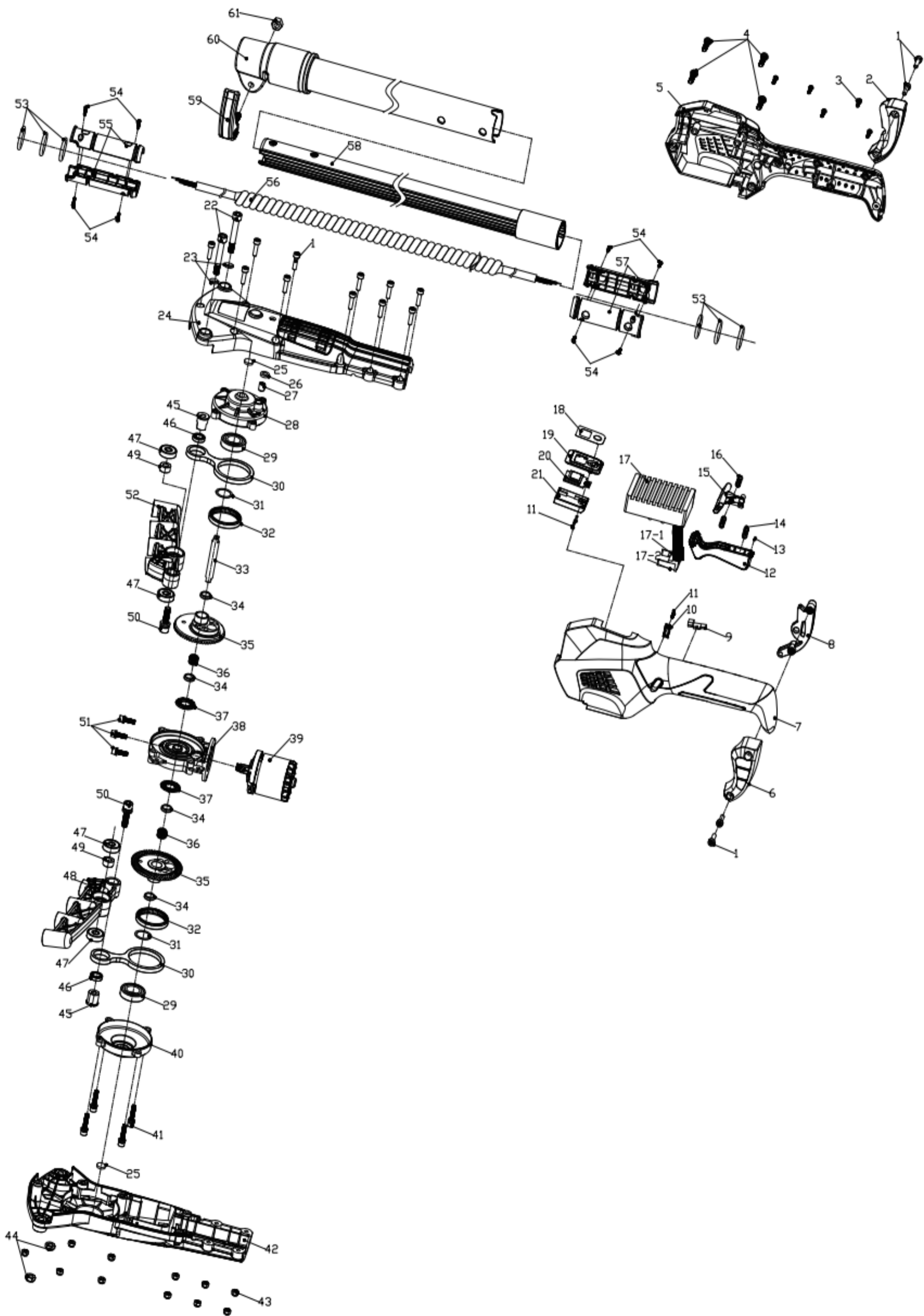


Telescopic model explosion diagram



S/N	DESCRIPTIONS OF PART	PART No.	QTY.
1	Screw (M4x15)	3100200080000	15
2	Right foot pad	3090300140000	1
3	Screw (ST3x12)	3100110050000	5
4	Screw (ST4x16)	3100110910000	4
5	Right shell of rear handle	3011800280000	1
6	Left foot pad	3090300130000	1
7	Left shell of rear handle	3011800280010	1
8	Foot bracket	3012000800000	1
9	Hall plate	4010702041000	1
10	Line deduction	3023110030000	1
11	Screw (ST2x6)	3100110040200	3
12	Trigger	3010500100900	1
13	Magnet (φ 2 x 3)	3160008000000	1
14	Spring	3070000130000	1
15	Switch lock	2180400440000	1
16	Lock knob pressure-spring	3014700460000	2
17	Control board	4011509000000	1
17-1	PCB board	2120003430000	1
17-2	Connector	3021000130000	1
18	Display labeling	3190100280000	1
19	Top shell of display screen	3010000870000	1
20	Display screen module	2220000290000	1
21	Lower shell of display screen	3010100870000	1
22	Screw (M6x40)	3108110780000	2
23	Spring washer (M6)	3150401400000	2
24	Top shell of olive machine	3011800103200	1
25	Rubber pad (φ 11.5 x1.0)	3092300500000	2
26	Rubber pad (φ6.4xφ10.5x1.8)	3092300400000	1
27	Copper nozzle (φ 6.5 x8.0)	3170400000000	1
28	Gearbox upper cover	3050500900000	1
29	Deep groove ball bearing (φ28xφ15x7)	3180142003000	2
30	Crank	3180500027000	2
31	Gasket (φ15.05xφ20x0.5)	3190200130000	2
32	Bi-directional needle roller bearing (φ 31x φ 37x6)	3180141000000	2
33	Main spindle	3052800000200	1
34	Sealing ring (φ 12 x φ 8 x 2.5)	3092300350000	4
35	Large umbrella teeth	3030380001000	2
36	Bi-directional needle roller bearing (φ8xφ12x12)	3180142002000	2
37	Needle roller bearing (φ 22.5 x φ 10.6 x2)	3130340001000	2
38	Gear box middle frame	3050500210000	1
39	Outward rotating motor 4325	6618000004000	1
40	Gearbox lower cover	3050500190000	1
41	Screw (M4x27+Spring+Pad)	3108110840000	4
42	Lower shell of olive machine	3011800003200	1
43	Nuts (M4)	3120000720000	11
44	Nuts (M6)	3120000710000	2
45	Crankshaft	3180500022000	2
46	Deep groove ball bearing (φ18xφ12x4)	3130800005000	2
47	Deep groove ball bearing (φ19xφ6x6)	3130028020000	4
48	Left base	3023800039000	1
49	Sleeve (φ 6.1 x φ 12x 6.4)	3103080001000	2
50	Screw (M6x22+Spring+Pad)	3108110830000	2
51	Screw (M4x14+Spring+Pad)	3108110860000	3
52	Right base	3023800041000	1
53	O-ring (φ 23 x φ 3.1)	3080100061000	6
54	Screw (ST2.6x12)	3100110470100	8
55	Waterproof bushing (for φ 28 pipes)	3018010164000	2
56	Three-core spring wire	3070000501400	1
57	Waterproof bushing (for φ35 pipes)	3018010162000	2
58	Corrugated pipe sleeve assembly (φ 28)	7030011000000	1
59	Ferrule trigger assembly	7011690011009	1
60	Carbon fiber tube ferrule assembly (φ 35)	3018000161000	1
61	Nuts (M6)	3103000143500	1
	Sleeve(φ 8 x φ 27x 8)	3103080002000	1
	Carbon Stick	7130002000000	8
	Carbon Stick Right surpport	3010900722000	1
	Carbon Stick left surpport	3010900721000	1